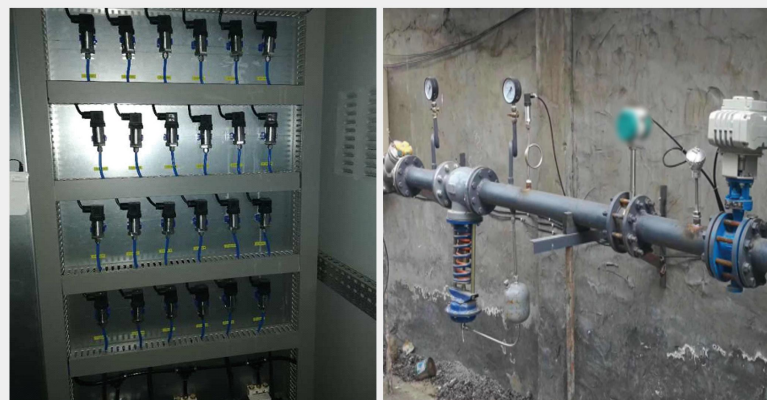


## HCDP-10 Pressure Transmitter



Application	Pressure, Liquid Level Measurement
Sensor Type	Silicon Piezoresistive Sensor
Measuring Range	0-60MPa
Accuracy	0.25%, 0.5%
Long-Term Stability	Better Than 0.2%FS Per Year
Medium temperature	(-40~105) °C
Signal Output	Two-Wire System (4~20)mA RS485 MODBUS-RTU/0-5V DC, 0-10V DC



Type	Code	Parameters	
Instrument Type	P	Standard	
	Y	Special Custom	
Process Connection	C	M20*1.5	
	G	G½	
	Y	Special Custom	
Electronic Unit	2	(4-20)mA	3 RS485 MODBUS-RTU
	4	0-5V DC	5 0-10V DC
	6	RS485Micro power consumption	Y Special Custom
Accuracy Grade	E	0.5% F.S	F 0.25% F.S
	Y	Special Custom	
Display	N	Without Display	
	D	Display Meter	
Calibration Range	01G	Gauge pressure (0~10KPa)	02G Gauge pressure (0~35KPa)
	04G	Gauge pressure (0~100KPa)	07G Gauge pressure (0~600KPa)
	09G	Gauge pressure (0~1.6MPa)	10G Gauge pressure (0~4MPa)
	11G	Gauge pressure (0~10MPa)	12G Gauge pressure (0~25MPa)
	13G	Gauge pressure (0~60MPa)	14G Gauge pressure (0~100MPa)
	15G	Negative pressure (±100KPa)	17G Negative pressure (-100~400KPa)
	18G	Negative pressure (-0.1~1MPa)	19G Negative pressure (-0.1~2.5MPa)
	02A	Absolute pressure (0~35KPa)	04A Absolute pressure (0~100KPa)
	07A	Absolute pressure (0~600KPa)	20A Absolute pressure (0~2.5MPa)
	Y	Special Custom	
Special Custom	Y	Special Custom	

Note: if there is overload requirement, please specify the overload pressure value.